



**BAJAJ**

*Inspiring Trust*



\*T&C Apply

*Presenting*  
ULTIMATE KITCHEN  
APPLIANCE COLLECTION

Free home service\*: 022 - 4128 0000 / 1800 102 5963 | [shop.bajajelectricals.com](http://shop.bajajelectricals.com) | [f](#) | [t](#) | [i](#)

\*T&C apply. Log on to [bajajelectricals.com/tnc](http://bajajelectricals.com/tnc) for terms and conditions

# *Introduction*



The ultimate kitchen appliance collection can only be presented to you by one company in India, Bajaj Electricals Ltd. The reasons for this are many and simple.

Bajaj has been one of the most trusted names in the Indian market for the past seventy-five years. Through thorough detailed research and study, this reputed company has created appliances that suit Indian kitchens perfectly. The type of food, the quantity - both these parameters have been taken into account while creating appliances which give you years of satisfying performance.

Today, Bajaj can boast of an appliance collection that has no rival. From conventional mixer/grinders and pressure cookers to the latest technology-driven appliances like microwaves, OTGs, food processors, blenders, water purifiers, rice cookers and induction cookers - Bajaj Electricals Ltd. undoubtedly offers you the ultimate range.

Make your kitchen a happier place today. Get yourself a Bajaj appliance.

# INDEX



---

|                          |       |
|--------------------------|-------|
| Pressure Cookers         | 01-14 |
| Cooktops                 | 15-24 |
| Cooker Hoods             | 25-28 |
| Mixer Grinders           | 29-44 |
| JMGs & Juicers           | 45-56 |
| Hand Blenders & Choppers | 57-64 |
| Induction Cookers        | 65-70 |

---

|                                      |        |
|--------------------------------------|--------|
| Pop-up Toasters &<br>Sandwich Makers | 71-78  |
| OTGs                                 | 79-86  |
| Microwave Ovens                      | 87-92  |
| Multi-Function<br>Cookers            | 93-98  |
| Kettles, Tea &<br>Coffee Makers      | 99-106 |





# Pressure Cookers







# PCX 65 H / 63 H

Hard Anodised Inner Lid  
Handi Pressure Cooker



- Made from virgin Hindalco aluminium
- Stick resistant, Durable
- Base thickness - 3.25 mm
- Anti-bulging base
- UL listed
- Also available in induction base
- Available in 3 L & 5 L

**5** Year  
Warranty

## PCX 63, PCX 65 (Inner Lid Handi Pressure Cooker)



- Made from virgin Hindalco aluminium
- Long-lasting gasket
- Base thickness - 3.25 mm
- UL listed
- Anti-bulging base
- Induction base
- Available in 3 L & 5 L

5  
Year  
Warranty



## Inner Lid Pressure Cooker



- Made from virgin Hindalco aluminium
- Base thickness - 3.25 mm
- Long-lasting gasket
- Anti-bulging base
- Available in 2 L, 3 L, 5 L, 6.5 L

5  
Year  
Warranty



## PCX 42, 43, 45

(Inner Lid Induction Base Pressure Cooker)



- Made from virgin Hindalco aluminium
- Anti-bulging base
- Base thickness - 3.25 mm
- UL listed
- Available in 2 L, 3 L & 5 L

**5** Year Warranty

## PCX 2, 3, 5, 7AT, 9T

(Outer Lid Pressure Cooker)



- Made from virgin Hindalco aluminium
- Base thickness - 3.5 mm
- Anti-bulging base
- Gasket release system
- Available in 2 L, 3 L, 5 L, 7.5 L & 9 L

**5** Year Warranty



## Junior Pan / Senior Pan



- Long-lasting gasket
- Can be used as a pressure kadai
- Base thickness - 3.25 mm
- Anti-bulging base
- Available in 3 L & 4 L

5  
Year  
Warranty



## Digital Pressure Cooker



- Non-stick coated pan
- SS body and black PP lid
- Safety valve to discharge excess pressure
- Thermostat to regulate temperature
- Thermal fuse for extra safety
- Available in 4.8 L

2  
Year  
Warranty



## Electric Pressure Cooker



- Non-stick coated pan
- SS body and lid
- Safety valve to discharge excess pressure
- Thermostat to regulate temperature
- Thermal fuse for extra safety
- Available in 4.8 L

**2** Year  
Warranty

**900W**  
HEATING ELEMENT

## Non-stick Kadai



- Non-stick coated 25-30 micron
- Coating of Whitford, USA
- Diameter - 240 / 280 mm with glass lid
- Thickness of 3 / 4 mm
- Induction base



## Non-stick Frying Pan



- Non-stick coated 25-30 micron
- Coating of Whitford, USA
- Diameter - 200 / 240 mm
- Thickness of 3 mm
- Induction base



## Non-stick Tawa



- Non-stick coated 25-30 micron
- Coating of Whitford, USA
- Diameter - 250 / 280 mm
- Thickness of 3 mm
- Induction base

**1**  
Year  
Warranty

## Non-stick Duo Cookware



- Non-stick coated 25-30 micron
- Coating of Whitford, USA
- Kadai - 240 mm with glass lid
- Frying pan - 240 mm
- Tawa - 250 mm
- Thickness of 3 mm
- Induction base

**1**  
Year  
Warranty



## Spatter Coated Non-stick Duo Cookware



- Non-stick coated 50 micron
- Spatter coating of Whitford, USA
- Kadai - 240 mm with glass lid
- Tawa - 250 mm
- Thickness of 4 mm
- PTFE/PFOA free
- Induction base
- Also available in pink

**1**  
Year  
Warranty

## Hard Anodized Kadai 2.5 L



- Hard Anodizing up to 50 micron
- Diameter - 240 / 280 mm
- Thickness - 3.25 / 4 mm
- Induction base
- Glass lid

**5**  
Year  
Warranty

## Hard Anodized Fry Pan



- Hard Anodized up to 50 micron
- Diameter - 240 mm
- Thickness - 3.25 mm
- Induction base

**5** Year Warranty

## Hard Anodized Tawa (TX 22 H/ 26 H)



- Hard Anodizing up to 50 micron
- Diameter - 225 /260 mm
- Thickness - 4 / 4.88 mm

**5** Year Warranty

## Hard Anodized Sauce Pan



- Hard Anodized up to 50 micron
- Thickness - 3.25 mm
- Available in 1 L / 1.5 L / 2 L
- Induction base

**5** Year  
Warranty

## Ceramic Duo Cookware



- Ceramic coated 30-35 micron
- Kadai 240 mm with glass lid
- Frying pan - 240 mm & Tawa - 250 mm
- Thickness of 3 mm
- Healthier way of cooking
- Keeps food warm
- Heat resistant exterior
- Metal spatula can be used
- Induction base

**5** Year  
Warranty

## Ceramic Kadai



- Ceramic coated 30-35 micron
- Metal spatula can be used
- Diameter - 200 / 240 mm
- Thickness of 3 mm
- Heat resistant exterior
- Healthier way of cooking
- Keeps food warm
- Induction base
- Available in orange

**5** Year Warranty

## Ceramic Fry Pan



- Ceramic coated 30-35 micron
- Metal spatula can be used
- Diameter - 200 / 240 mm
- Thickness of 3 mm
- Heat resistant exterior
- Healthier way of cooking
- Keeps food warm
- Induction base
- Available in orange

**5** Year Warranty

## Ceramic Casserole



- Ceramic coated 30-35 micron
- Metal spatula can be used
- Diameter - 200 / 240 mm
- Thickness of 3 mm
- Heat resistant exterior
- Healthier way of cooking
- Keeps food warm
- Induction base
- Available in orange
- Available in 3 L & 5 L

**5** Year Warranty

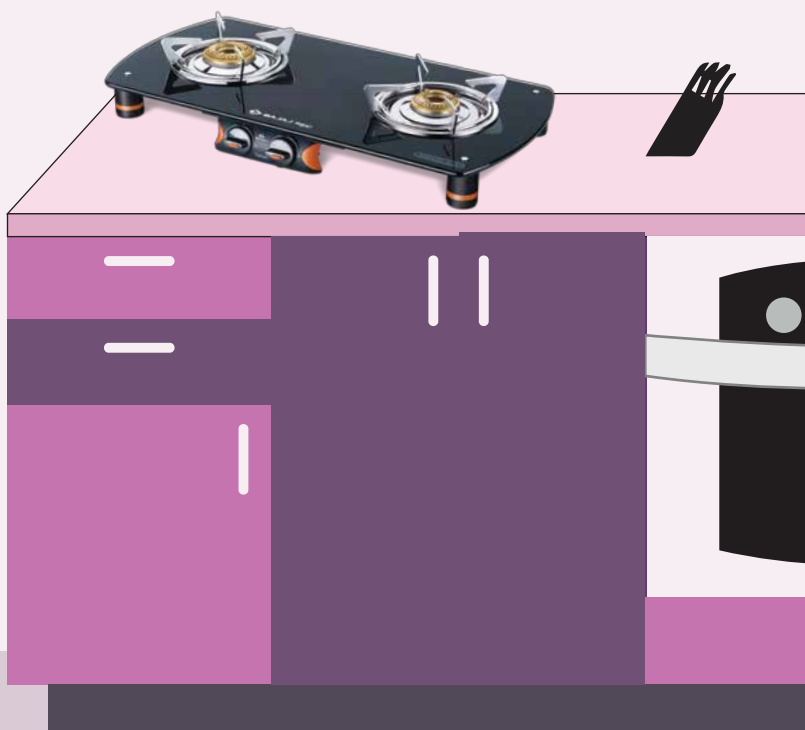
## Ceramic Saucepan



- Ceramic coated 30-35 micron
- Metal spatula can be used
- Diameter - 180 / 200 mm
- Thickness of 3 mm
- Heat resistant exterior
- Healthier way of cooking
- Keeps food warm
- Induction base
- Available in orange
- Available in 1.5 L & 2 L

**5** Year Warranty

# Cooktops





**NEW**



## Majesty Infinity



- 2 burner cook top
- Toughened glass top
- With SS pan support
- Detachable SS drip tray
- Fire Retardant Nylons
- Elegant looking legs
- Spacious body



NEW



## Majesty Jewel Bubble



- 3 burner cook top
- Toughened glass with digital color print
- With SS pan support
- Aluminum pressure die cast mixing tube to ensure longer life
- SS leg for durability
- Laser cut body with embedded stainless steel drip tray
- With jumbo burner
- 360° central swivel nozzle

NEW



## Majesty Jewel Wave



- 3 burner cook top
- Toughened glass with digital color print
- With SS pan support
- Aluminum pressure die cast mixing tube to ensure longer life
- SS leg for durability
- Laser cut body with embedded stainless steel drip tray
- With jumbo burner
- 360° central swivel nozzle

## CGX 2 Eco Glass Body



- 2 burner system
- Matt finish with stainless steel body with toughened glass
- Eye design around the knob for elegant design
- Proper space for accommodating the vessels
- Space saving and convenient



## CGX 3 Eco Glass Body



- 3 burner system
- Matt finish with stainless steel body and toughened glass
- Aluminum pressure die cast mixing tube to ensure longer life
- Elegant design
- Space saving and convenient



## CGX 4 Glass Body



- 4 burner system
- Matt finish stainless steel body with toughened glass top
- Aluminum pressure die cast mixing tube to ensure longer life
- Stainless steel drip tray
- High temperature resistant coated pan supports
- 360° central swivel nozzle



## CGX 9 Glass Body



- 3 burner system
- Extra wide body
- Toughened glass top with jumbo burner
- Aluminum pressure die cast mixing tube to ensure longer life
- Stainless steel drip tray
- High temperature resistant coated pan support
- 360° central swivel nozzle





## CGX10 Glass Body



JUMBO BURNER

- 4 burner system
- Matt finish SS body with toughened glass top
- Aluminum pressure die cast mixing tube to ensure longer life
- Stainless steel drip tray
- High temperature resistant coated pan supports
- 360° central swivel nozzle

## Popular ECO



- 2 burner system
- Stainless steel body
- Aluminum pressure die cast mixing tube to ensure longer life



## CX 8 SS



- 2 burner system
- Stainless steel body
- Stainless steel drip tray
- Aluminum pressure die cast mixing tube to ensure longer life
- Ribs in the centre of the body to add strength



## CX 9 SS



- 3 burner system
- Stainless steel body
- Stainless steel drip tray
- Aluminum pressure die cast mixing tube to ensure longer life
- Ribs in the center of the body to add strength



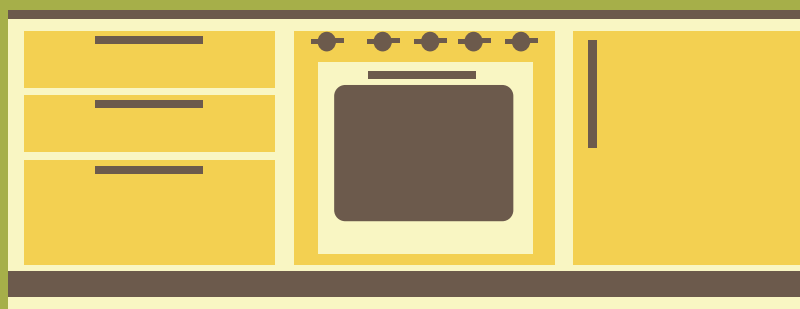
## CX 10 D SS



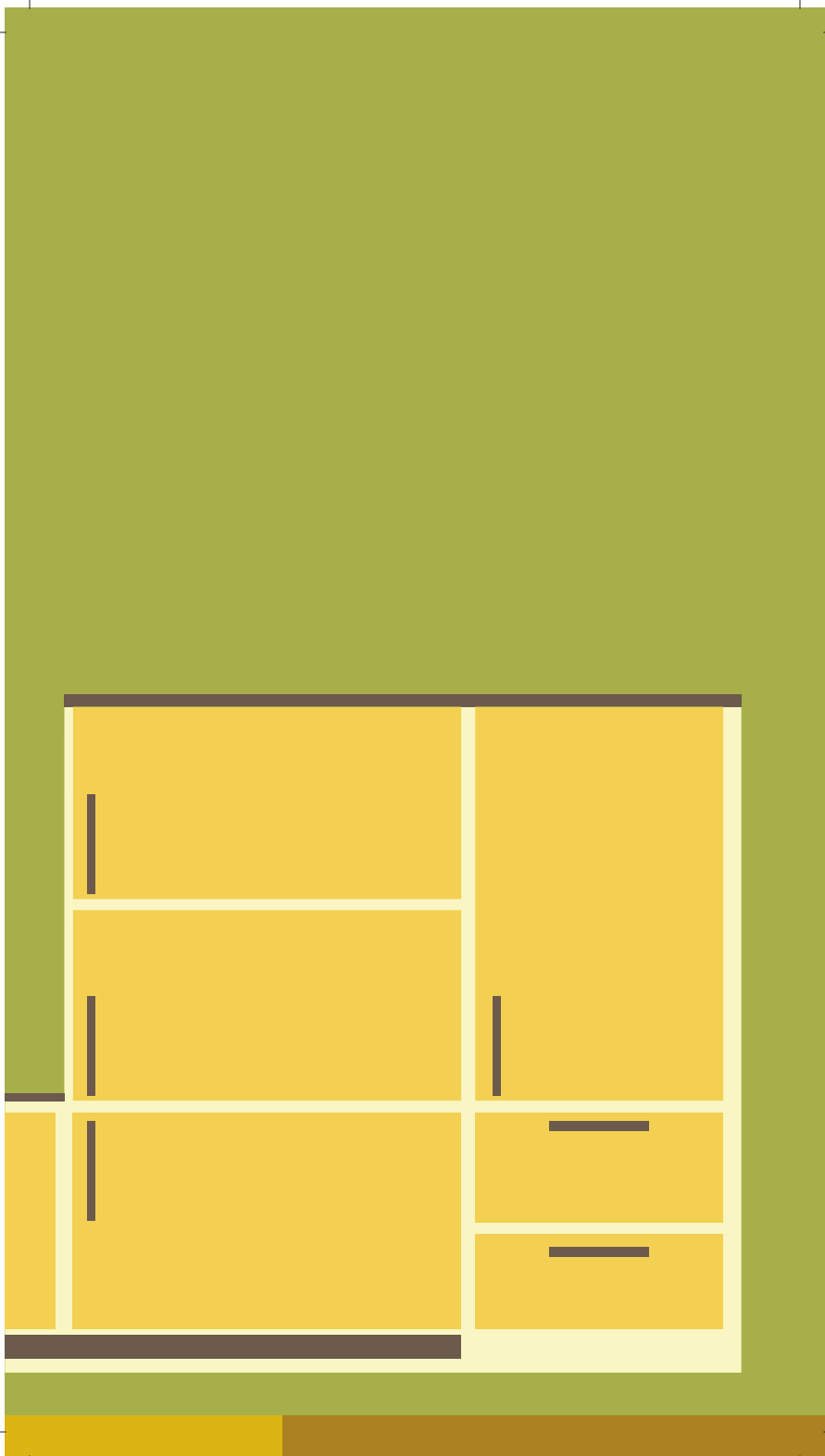
- 4 burner system
- Stainless steel body
- Stainless steel drip tray
- Aluminum pressure die cast mixing tube to ensure longer life
- Ribs in the centre of the body to add strength
- 360° central swivel nozzle



# Cooker Hoods









## Majesty HX 7 BF



- Stainless steel straight line model
- Chrome plated push button control panel
- Powerful twin suction of 650 m<sup>3</sup>/hr.
- Size 60 cms. with baffle filter
- Optional charcoal filters for re-circulation mode

## Majesty HX 8 BF Cooker Hood



- Sturdy stainless steel decorative model
- Hi-tech design to maintain freshness
- Powerful suction of 1000 m<sup>3</sup>/hr.
- Size 60 cms. with baffle filter
- Compatible for re-circulation with (optional) charcoal filter



## Majesty HX 1 Cooker Hood

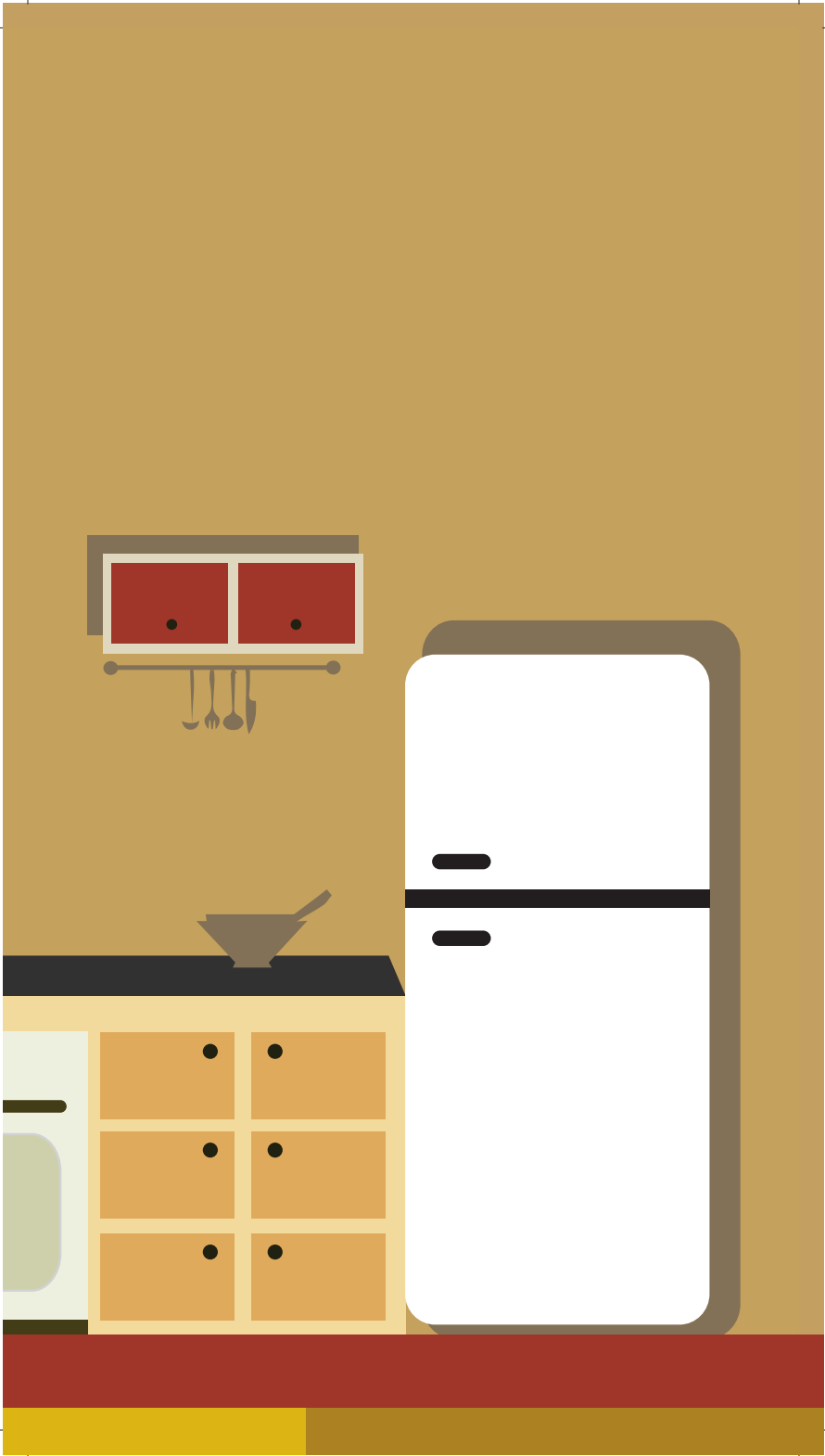


- Sturdy straight line model with black powder coating to suit decor
- Chrome plated push button control panel
- Powerful twin suction of 650 m<sup>3</sup>/hr.
- Size 60 cms. with aluminium grease filter
- Optional charcoal filters for re-circulation mode
- Optional baffle filter



# Mixer Grinders







With  
2 Duracut Blades



# Helix Mixer Grinder

**5** Year  
Warranty  
on Motor

**2** YEAR WARRANTY ON PRODUCT

**POWERFUL  
750W  
MOTOR**

With 30 Min. rating

- RPM - 18000
- No. of jars - 3
- Liquidizing jar - 1.5 ltr.
- Dry grind jar - 1.0 ltr.
- Chutney jar - 0.3 ltr.
- No. of polycarbonate domes - 3



## Helix Ultra

**5** Year  
Warranty  
on Motor

**3** YEAR WARRANTY ON PRODUCT

POWERFUL  
**750W**  
MOTOR  
With 30 Min. rating

**★** SS304  
BLADES

**★** SUPER  
STRONG  
JARS

- RPM - 18000
- No. of jars - 3
- Liquidizing jar - 1.5 ltr.
- Dry grind jar - 1.0 ltr.
- Chutney jar - 0.4 ltr.
- No. of polycarbonate domes - 3
- Tetra flow technology to ensure even mixing and grinding



## Trio Plus

- RPM - 18000
- No. of jars - 3
- Liquidizing jar - 1.5 ltr.
- Dry grind jar - 1.0 ltr.
- Chutney jar - 0.4 ltr.
- No. of polycarbonate domes - 3
- Tetra flow technology to ensure even mixing and grinding
- Hands free lid with locking clips
- Unbreakable handle and lids

**7**  
Year  
Warranty  
on Motor

**3**  
Year  
Warranty  
on Product

**POWERFUL  
600W  
MOTOR**

With 30 Min. rating



## Ruby



- RPM - 18000
- No. of jars - 3
- Liquidizing jar - 1.5 ltr.
- Dry grind jar - 1.0 ltr.
- Chutney jar - 0.3 ltr.
- Unbreakable handle and lids

- Tetra flow technology to ensure even mixing and grinding

**5** Year  
Warranty  
on Motor

**2** YEAR WARRANTY ON PRODUCT

POWERFUL  
**500W**  
MOTOR  
With 30 Min. rating

**★** SS304  
BLADES

**SUPER  
STRONG  
JARS**

## Popular MG



- RPM - 18000
- No. of jars - 3
- Liquidizing jar - 1.5 ltr.
- Dry grind jar - 1.0 ltr.
- Chutney jar - 0.3 ltr.
- No. of polycarbonate domes - 1

**2** Year  
Warranty  
on Motor

**2** YEAR WARRANTY ON PRODUCT

POWERFUL  
**450W**  
MOTOR  
With 30 Min. rating

## Twister



- RPM - 18000
- No. of jars - 3
- Liquidizing jar - 1.5 ltr.
- Dry grind jar - 1.0 ltr.
- Chutney jar - 0.3 ltr.
- No. of polycarbonate domes - 3

**4**  
**BLADES**  
**FREE**

**5**  
Year  
Warranty  
on Motor

**1**  
YEAR WARRANTY ON PRODUCT

**POWERFUL**  
**750W**  
**MOTOR**

With 30 Min. rating

## Classic 750



- RPM - 18000
- No. of jars - 3
- Liquidizing jar - 1.5 ltr.
- Dry grind jar - 1.0 ltr.
- Chutney jar - 0.3 ltr.
- No. of polycarbonate domes - 1

**5**  
Year  
Warranty  
on Motor

**1**  
YEAR WARRANTY ON PRODUCT

**POWERFUL**  
**750W**  
**MOTOR**

With 30 Min. rating

## GX 11 750W



- RPM - 18000
- No. of jars - 3
- Liquidizing jar - 1.5 ltr.
- Dry grind jar - 1.0 ltr.
- Chutney jar - 0.3 ltr.
- No. of polycarbonate domes - 1

**5**  
Year  
Warranty  
on Motor

**7**  
YEAR WARRANTY ON PRODUCT

**POWERFUL**  
**750W**  
MOTOR

With 30 Min. rating

## Trio



- RPM - 18000
- No. of jars - 3
- Liquidizing jar - 1.5 ltr.
- Dry grind jar - 1.0 ltr.
- Chutney jar - 0.4 ltr.
- No. of polycarbonate domes - 3
- Hands-free operation

**7**  
Year  
Warranty  
on Motor

**7**  
YEAR WARRANTY ON PRODUCT

**POWERFUL**  
**600W**  
MOTOR

With 30 Min. rating

## GX 10 DLX



- RPM - 18000
- No. of jars - 3
- Liquidizing jar - 1.5 ltr.
- Dry grind jar - 1.0 ltr.
- Chutney jar - 0.3 ltr.
- No. of Polycarbonate domes - 3

**3**  
**BLADES**  
**FREE**

**5** Year  
Warranty  
on Motor



**POWERFUL**  
**600W**  
**MOTOR**

With 30 Min. rating

## GX 7



- RPM - 20000
- No. of jars - 3
- Liquidizing jar - 1.5 ltr.
- Dry grind jar - 1.0 ltr.
- Chutney jar - 0.3 ltr.

**2** Year  
Warranty  
on Motor



**POWERFUL**  
**500W**  
**MOTOR**

With 30 Min. rating

## GX 6



- RPM - 20000
- No. of jars - 3
- Liquidizing jar - 1.5 ltr.
- Dry grind jar - 1.0 ltr.
- Chutney jar - 0.3 ltr.

**2** Year  
Warranty  
on Motor

**3** YEAR WARRANTY ON PRODUCT

**POWERFUL**  
**500W**  
MOTOR

With 30 Min. rating

## Bravo DLX



- RPM - 20000
- No. of jars - 3
- Liquidizing jar - 1.3 ltr.
- Dry grind jar - 1.0 ltr.
- Chutney jar - 0.3 ltr.

**2** Year  
Warranty  
on Motor

**3** YEAR WARRANTY ON PRODUCT

**POWERFUL**  
**500W**  
MOTOR

With 30 Min. rating

## Glory



- RPM - 20000
- No. of jars - 3
- Liquidizing jar - 1.2 ltr.
- Dry grind jar - 1.0 ltr.
- Chutney jar - 0.4 ltr.
- No. of polycarbonate domes - 3

**2** Year  
Warranty  
on Motor

**3** YEAR WARRANTY ON PRODUCT

**POWERFUL**  
**500W**  
MOTOR

With 30 Min. rating

## GX 3 500



- RPM - 20000
- No. of jars - 3
- Liquidizing jar - 1.2 ltr.
- Dry grind jar - 0.8 ltr.
- Chutney jar - 0.3 ltr.

**2** Year  
Warranty  
on Motor

**3** YEAR WARRANTY ON PRODUCT

**POWERFUL**  
**500W**  
MOTOR

With 30 Min. rating

Easy



- RPM - 20000
- No. of jars - 3
- Liquidizing jar - 1.5 ltr.
- Dry grind jar - 1.0 ltr.
- Chutney jar - 0.3 ltr.

**5** Year  
Warranty  
on Motor

**3** YEAR WARRANTY ON PRODUCT

POWERFUL  
**500W**  
MOTOR

With 30 Min. rating

## WX 9 Wet Grinder With Arm



- Capacity - 2 ltr.
- Stylish design
- Comfort of arm
- LED indication for On/Off



With 30 Min. rating

## WX 3 Wet Grinder



- Capacity - 2 ltr.
- Compact and sturdy design



With 30 Min. rating



# New FX 9 Food Processor



- Variable Speed Selection:  
2 speed + pulse
- 9 variable & convenient attachments
- 2 ltr. Processor bowl with 1.4 ltr. operating volume
- Stainless steel blades for chopping, slicing, shredding & french fries
- Convenient blade for atta kneading & whisking
- Citrus juicer attachment
- 1.8 ltr. liquidizing jar
- Stylish & compact design
- Black & silver chrome finish
- Chutney Jar - 450 ml.

# Masterchef 3.0



**STRONG  
BELT**



**SS CUTTER  
IN CENTRIFUGAL JUICER**



**25%  
BIGGER JARS**



**UNIT OF 15  
ATTACHMENT**



**3 JARS**

- RPM - 18000
- Attachments include
  - No. of jars - 3
  - Liquidizing jar - 1.5 ltr.
  - Dry grind jar - 1.0 ltr.
  - Chutney jar - 0.4 ltr.
  - Processing bowl
- Accessories include
  - Egg whisker
  - Centrifugal juicer
  - Atta kneader
  - Chopping blade
  - Citrus juicer
- Processing blades include
  - Finger chips / french fries blade
  - Slicer fine
  - Slicer coarse
  - Shredding fine
  - Shredding coarse
  - Coconut shredding blade



**5  
Year  
Warranty  
on Motor**



**2 YEAR WARRANTY**



**POWERFUL  
600W  
MOTOR**

With 30 Min. rating

# FX 11 Food Processor



**5**  
Year  
Warranty  
on Motor

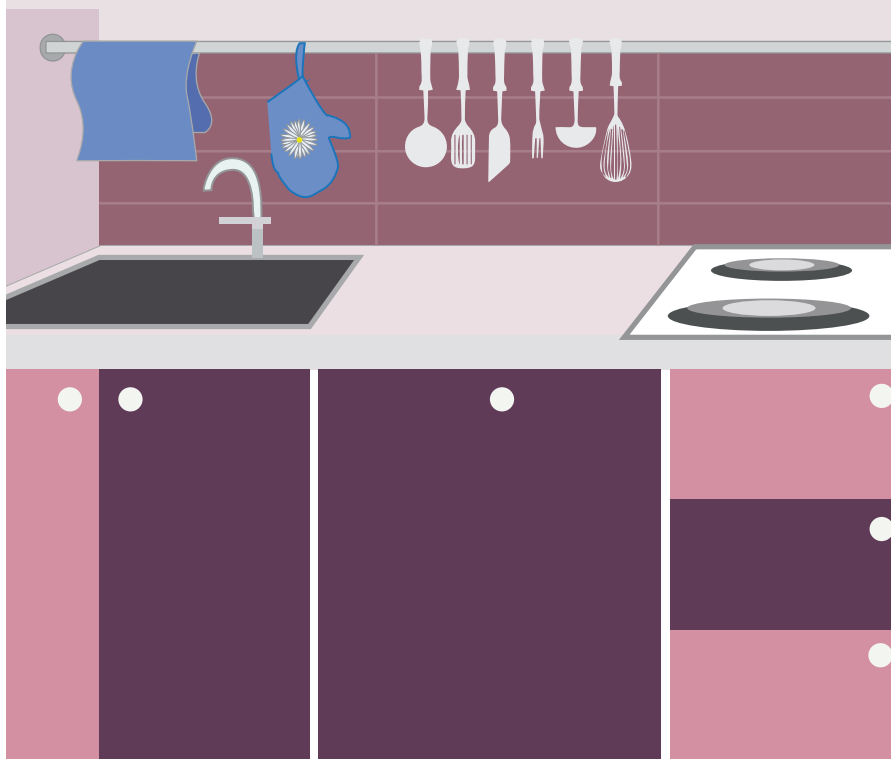
**3**  
YEAR WARRANTY ON PRODUCTS

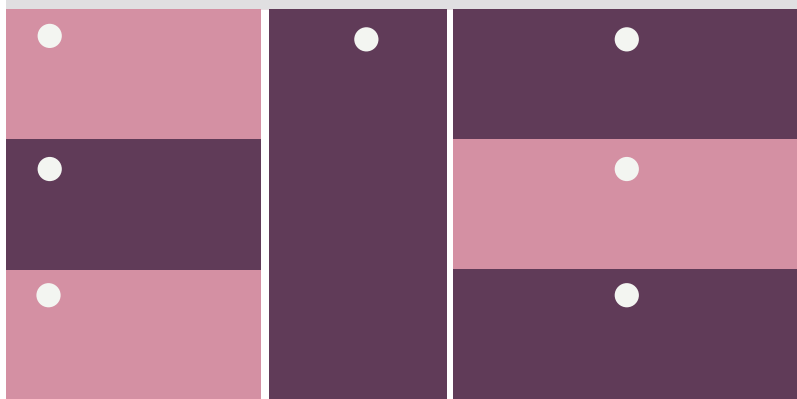
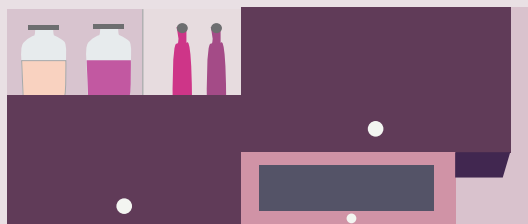
**POWERFUL  
600W  
MOTOR**  
With 30 Min. rating

**UNIT OF 14  
ATTACHMENT**

- RPM - 18000
- Attachments include
  - No. of jars - 3
  - Liquidizing jar - 1.25 ltr.
  - Dry grind jar - 1.0 ltr.
  - Chutney jar - 0.3 ltr.
  - Processing bowl
- Accessories include
  - Egg whisker
  - Centrifugal juicer
  - Atta kneader
  - Chopping blade
  - Citrus juicer
- Processing blades include
  - Finger chips / french fries blade
  - Slicer coarse
  - Shredding fine
  - Shredding coarse
  - Coconut shredding blade

# JMGs





## Majesty JX 4



- RPM - 18000
- No. of jars - 2
- Liquidizing jar - 1.25 ltr.
- Dry grind jar - 0.6 ltr.

**2** Year  
Warranty  
on Motor



SILENT  
**450W**  
MOTOR

## JX 5



- RPM - 18000
- No. of jars - 2
- Liquidizing jar - 1.5 ltr.
- Dry grind jar - 1 ltr.
- Pulp container - 2 ltr.

**5** Year  
Warranty  
on Motor



SILENT  
**450W**  
MOTOR



## JX 7

- RPM - 18000
- No. of jars - 2
- Liquidizing jar - 1.5 ltr.
- Dry grind jar - 1 ltr.
- Pulp container - 2 ltr.
- Detachable pulp collector - 2 ltr.
- Locking system

**2** Year  
Warranty  
on Motor

**2** YEAR WARRANTY ON PRODUCT

SILENT  
**500W**  
MOTOR

## Fresh Sip



- RPM - 18000
- No. of jars - 2
- Liquidizing jar - 1.5 ltr.
- Dry grind jar - 1 ltr.

**5** Year  
Warranty  
on Motor

**2** YEAR WARRANTY ON PRODUCT

**SILENT**  
**450W**  
MOTOR



JX 10



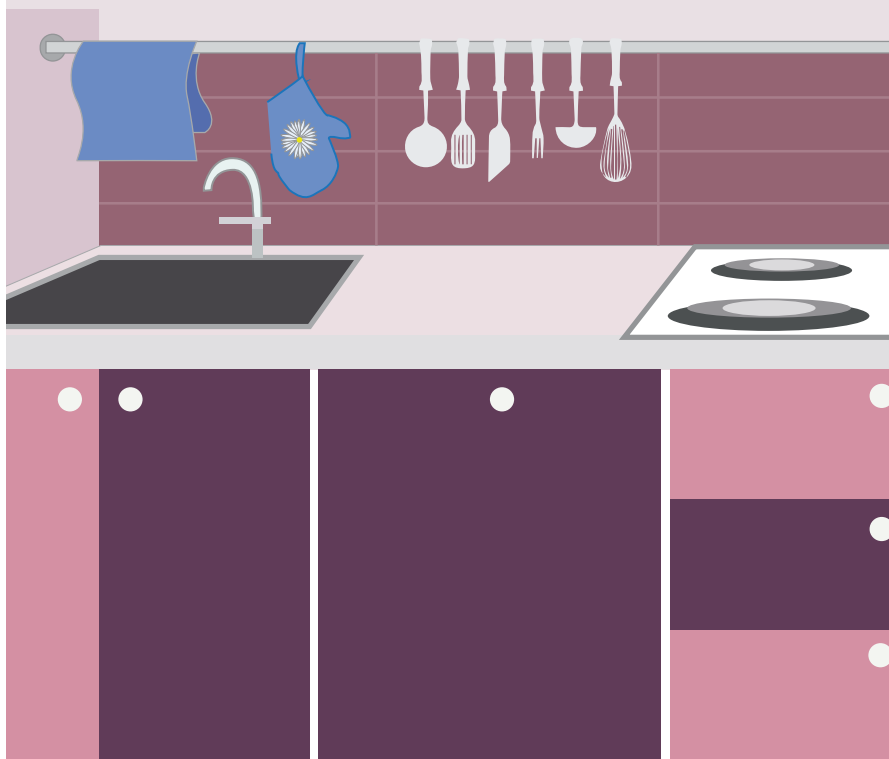
- RPM - 18000
- No. of jars - 3
- Liquidizing jar - 1.5 ltr.
- Dry grind jar - 1 ltr.
- Chutney jar - 0.4 ltr.

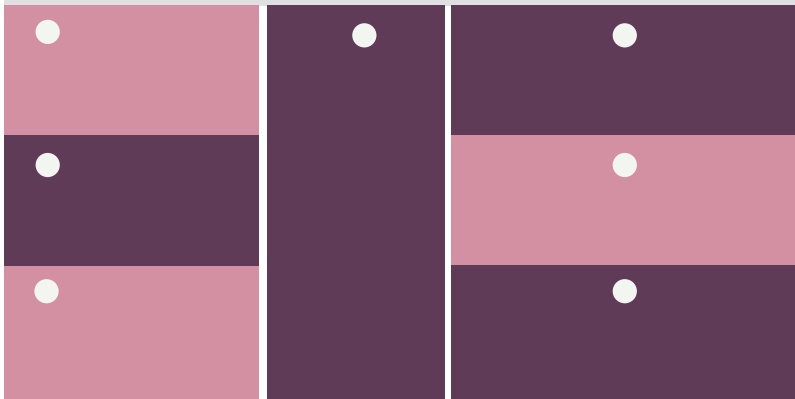
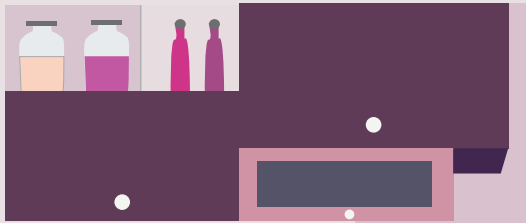
**5** Year  
Warranty  
on Motor

**3** YEAR WARRANTY ON PRODUCT

SILENT  
**450W**  
MOTOR

# Juicers







## JEX 16 Full Apple Juicer

- SS juicing mesh
- 2 speed control
- Elegant backlit LED control panel
- Juice collector - 1 ltr. capacity
- Easily removable & washable strainer
- Extra 75 mm feeding tube
- Dual lock for enhanced safety
- SS brush finish

**2** Year  
Warranty  
on Motor

**2** YEAR WARRANTY ON PRODUCT

SILENT  
**800W**  
MOTOR



## JEX 15 Juicer

- Stylish design with SS brush finish
- Double lock for enhanced safety
- 2 speed control
- Elegant LED switch panel
- Fruit tray for convenient juicing
- Pulp container - 1 ltr.

**2** Year  
Warranty  
on Motor

**5** YEAR WARRANTY ON PRODUCT

**SILENT**  
**400W**  
MOTOR

## Majesty Juice Extractor



- RPM - 16000
- Two speed control
- Online transparent pulp container
- Dual lock for enhanced safety
- Pulp container - 0.7 ltr.

**2** Year  
Warranty  
on Motor

**2** YEAR WARRANTY ON PRODUCT

SILENT  
**400W**  
MOTOR

## Juicer One



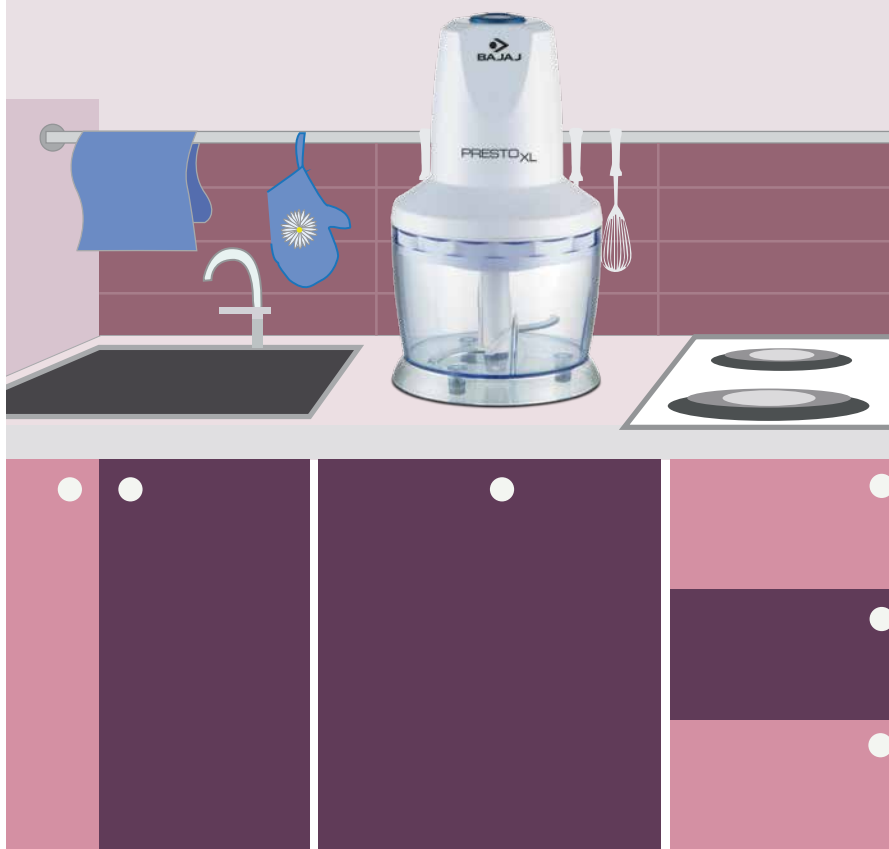
- 3 speed control
- Super fine mesh
- Pulp Container - 1 ltr.
- Transparent top cover

**2** Year  
Warranty  
on Motor

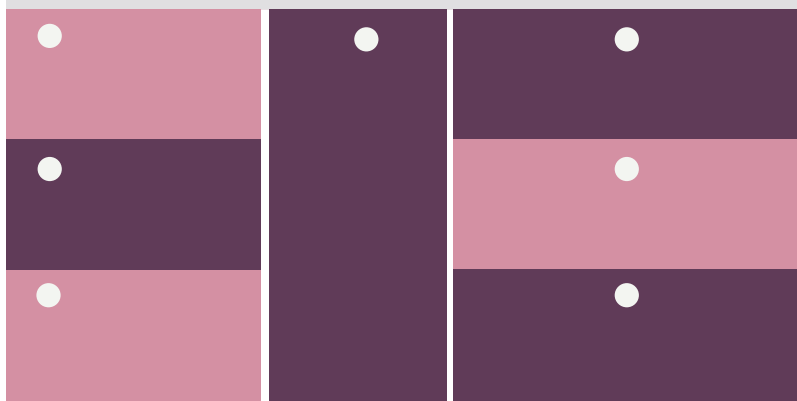
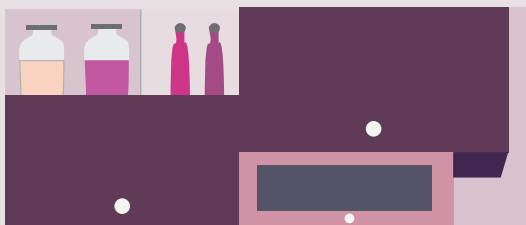
**2** YEAR WARRANTY ON PRODUCT

SILENT  
**500W**  
MOTOR

# Hand Blenders & Choppers







## HB 04 Hand Blender



- Silent 300 W powerful motor
- Full plastic shaft
- Wall hanging bracket at the neck
- Click-Fit locking system of shaft



## HB 05 Hand Blender



- Silent 250 W powerful motor
- Stainless steel shaft
- Ergonomically designed switches
- Wall hanging bracket at the neck
- Click-Fit locking system of shaft



# HB 10 Hand Blender



- DC motor prevents overheating
- Click-fit locking system of shaft
- Detachable ABS blender stem for easy cleaning
- Penta flow breaker system reduces time and effort
- Ergonomically designed handles
- Mounting hanger available

**2** Year  
Warranty  
on Motor

**2** YEAR WARRANTY ON PRODUCT

SILENT  
**300W**  
MOTOR

  
DC MOTOR



## HB 11 Hand Blender

- Detachable SS blender stem for easy cleaning
- Penta flow breaker system reduces time and effort
- DC motor prevents over heating
- Click-fit locking system of shaft
- Ergonomically designed handles
- Mounting hanger available

**2** Year  
Warranty  
on Motor



## HB 12 Hand Blender

- Additional chopping jar
- DC motor prevents over heating
- Click-fit locking system of shaft
- Detachable SS blender stem for easy cleaning
- Penta flow breaker system reduces time and effort
- Ergonomically designed handles
- Mounting hanger available

**2** Year  
Warranty  
on Motor



# HM 01 Hand Mixer



- 3 speed control
- SS dough hooks and beater attachment
- Stylish design & color – black matt finish
- Eject button available
- Sliding/push switch for convenient & safe operation



Stainless Steel  
Dough Hooks



Cake Beaters

**2** Year  
Warranty  
on Motor



SILENT  
**250W**  
MOTOR

## Presto XL



- Transparent bowl with volume calibration
- Multi-purpose chopping blade and whisking disc
- Built-in integrated handles for convenience
- Capacity - 1 ltr.



## HC 01 Horizontal Chopper



- Stylish design - white & green dual color
- Lid locking safety device
- Capacity - 375 ml.

**2** Year  
Warranty  
on Motor

**3** Year  
Warranty  
on Product

**SILENT**  
**135W**  
MOTOR

# Induction Cookers









## Bajaj Expert Induction Cooker

- Pre set menus
- Variable temperature and power selection
- Tact switches

**1**  
Year  
Warranty

POWERFUL  
**1200W**

**7** PRE-  
SET  
MENUS

## ICX Pearl Induction Cooker



- Digital LED display
- Tact switch controls
- Working voltage range: 130V to 260V
- Semi polished crystal glass:  
260 mm\* 260 mm

**1**  
Year  
Warranty

POWERFUL  
**1900W**

**8**  
PRE-  
SET  
MENUS

## ICX Touchpro Induction Cooker



- Auto cook menu selections
- Variable temperature and  
time selection

**1**  
Year  
Warranty

POWERFUL  
**2000W**

**6**  
PRE-  
SET  
MENUS

## Popular Ultra Induction Cooker



- Digital LED display
- Tact switch controls
- Semi polished crystal glass:  
250 mm\* 250 mm

**1**  
Year  
Warranty

POWERFUL  
**1400W**

**7**  
PRE-  
SET  
MENUS

## ICX Neo Induction Cooker



- Digital LED display
- Tact switch controls
- Working voltage range:  
130V to 260V
- Semi polished crystal glass:  
260 mm\* 260 mm

**1**  
Year  
Warranty

POWERFUL  
**1600W**

**7**  
PRE-  
SET  
MENUS

# ICX 7 Induction Cooker



- Digital LED display
- Tact switch controls
- Power consumption indicator
- Polished crystal glass:  
280 mm\* 270 mm

**1**  
Year  
Warranty

POWERFUL  
**1900W**

**8**  
PRE-  
SET  
MENUS

# Pop-up Toasters & Sandwich Makers





## ATX 3 (2 Slice)



- 2 slice auto pop-up toaster
- SS finish metal body housing
- 6 levels of browning control
- Mid-cycle cancel



## ATX 4 (2 Slice)



- 6 levels of browning control
- Mid-cycle cancel
- Reheat function
- Easy slide out crumb tray
- Extra wide slot
- Cord winder







## Majesty Easy Pop Auto (2 Slice)

- 6 levels of browning control
- Mid-cycle cancel
- Easy slide out crumb tray
- Bread centering guides
- Dust cover
- Extra wide slot of 30 mm for easy bread lifting
- Cord winder



## Majesty ATX 9 (2 slices)



- 6 levels of browning control
- Mid-cycle cancel
- Defrost & reheat function
- Easy slide out crumb tray
- Bread centering guides
- Extra wide slot of 30 mm for easy bread lifting
- Cord winder



## Majesty ATX 21 (4 slices)



- 6 levels of browning control
- Mid-cycle cancel
- Easy slide out crumb tray
- Cord winder



## Majesty New SWX 3 Sandwich



- Bakelite body with powder coat finish
- Non-stick coated plates for easy cleaning and maintenance
- Stands upright for compact storage
- Neon indicator
- Cord winder at the base
- Buckle clip on handle
- Also available SWX 4 Sandwich Grill Toaster



## Majesty New SWX 7 Sandwich



- Bakelite body with SS trim
- Non-stick coated plates for easy cleaning and maintenance
- Stands upright for compact storage
- Neon indicator
- Cord winder at the base
- Buckle clip on handle
- Also available SWX 8 Sandwich Grill Toaster



## Majesty Grill Ultra

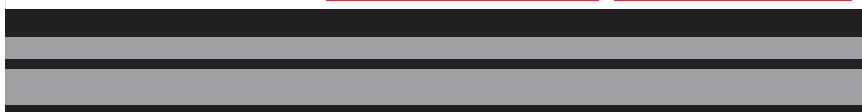
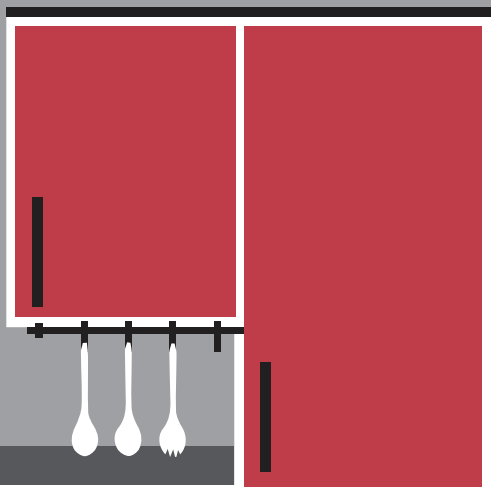


- 4 Slice sandwich press
- Attractive Bakelite body with SS trim
- Adjustable floating hinge system
- Stands upright for compact storage
- 180° open grill
- Drip oil collector
- Non-stick coated plate
- Adjustable temperature control
- Neon indicator



# OTGs







## Majesty 1000 TSS

- 60 minute timer
- Stainless steel body
- Transparent glass door
- Accessories available
  - Grill rack
  - Baking tray
  - Crumb tray
  - Extra pizza tray
  - Tong





## Majesty 1603 TSS



- 60 minute timer
- Stainless steel body
- Function selection switch
- Transparent glass door
- Accessories available
  - Grill rack
  - Baking tray
  - Skewer rods
  - Crumb tray
  - Tong for baking/ grill tray
- Also available 1603 T OTG, powder coated body



## Majesty 2200 TMSS



- 60 minute timer
- Stainless steel body
- Function selection switch
- Transparent glass door
- Accessories available
  - Grill rack
  - Baking tray
  - Skewer rods
  - Rotisserie attachment
  - Tongs for Rotisserie attachment and Grill/Baking trays
  - Crumb tray
- Also available 2200T OTG, powder coated body without motorized rotisserie



22 L

## Majesty 2800 TMCSS



- 60 minute timer
- With convection feature
- Stainless steel body
- Function selection switch
- Transparent glass door
- With motorised rotisserie
- Accessories available
  - Grill rack
  - Baking tray
  - Skewer rods
  - Rotisserie attachment
  - Tongs for Rotisserie attachment and Grill/Baking trays
  - Crumb tray



## Majesty 3500 TMCSS



- 60 minute timer
- With convection feature
- Stainless steel body
- Function selection switch
- Transparent glass door
- With motorised rotisserie
- Accessories available
  - Grill rack
  - Baking tray
  - Skewer rods
  - Rotisserie attachment
  - Tongs for Rotisserie attachment and Grill/Baking trays
  - Crumb tray



## Majesty 4500 TMCSS



- 60 minute timer
- Convection type
- Stainless steel body
- Function selection switch
- Transparent glass door
- With motorised rotisserie
- Accessories available
  - Grill rack
  - Baking tray
  - Skewer rods
  - Rotisserie attachment
  - Tongs for Rotisserie attachment and Grill/Baking trays
  - Crumb tray



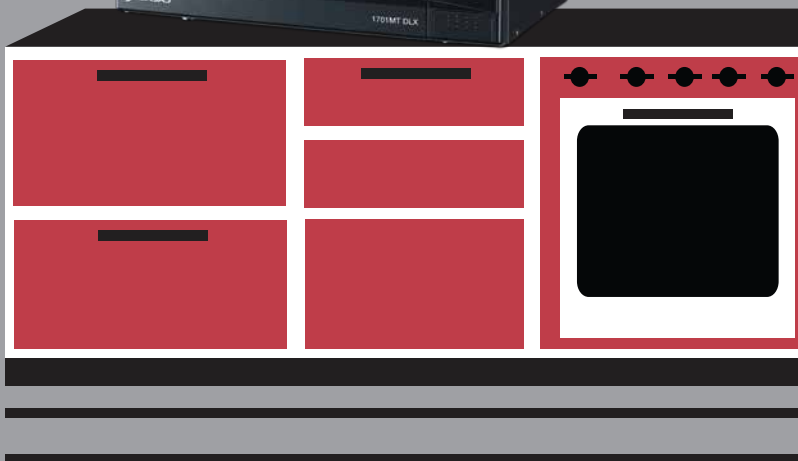
# AFX 7

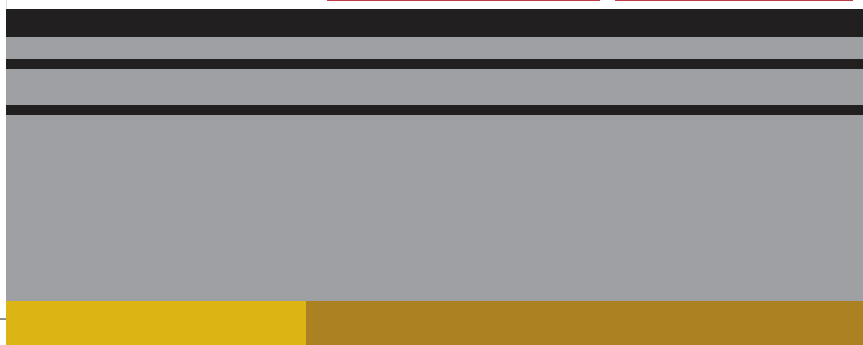
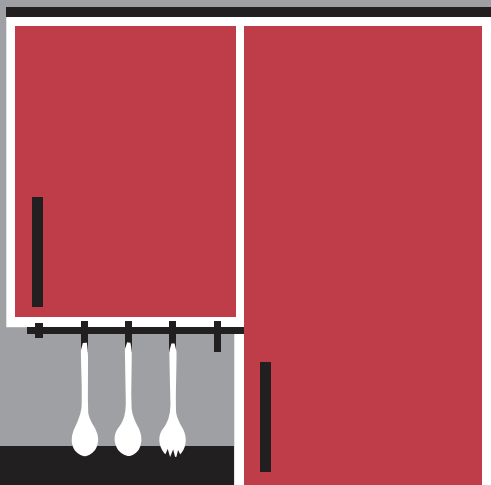


- Dual Fan (DF) technology for efficient heat circulation
- Flow Director (FD) technology for turbo thermal flow
- Adjustable temperature control
- 0-60 minutes timer
- Suitable for shallow frying, baking & toasting
- Additional safety features:
  - Fail start mechanism prevents appliance being turned ON due to incorrect closure of fry basket
  - Integrated lock for firm locking of fry basket
  - Safety cover to prevent accidental dropping of basket.
- Integrated stainless steel trim for enhanced aesthetics



# Microwave Ovens







## 1701 MT DLX Microwave Oven

- 1701 MT DLX (Solo)
- Mechanical controls
- Multi-power level
- 30 minute timer
- Time defrost
- Cooking complete alarm
- Also available in 1701 MT (White)

**1** Year  
Warranty  
on Product

**17 L**

**POWERFUL  
1200W**



## 2005 ETB



- Grill type
- Electronic controls
- Multi-power level
- 60 minute timer
- Auto cook
- Time and weight defrost
- Cooking complete alarm
- Child safety lock
- Multi-stage cooking

**1** Year  
Warranty  
on Product

**20 L**

**POWERFUL  
1200W**

## 2310 ETC Microwave Oven



- Convection type
- Electronic controls
- Multi-power level
- 95 minutes digital timer
- Auto cook
- Express and combination cooking
- Time and weight defrost
- Keep warm
- Deodorize & steam clean
- Cooking complete alarm
- Child safety lock
- Multi-stage cooking

**1** Year  
Warranty  
on Product

**23 L**

**POWERFUL  
1300W**

## 2504 ETC Microwave Oven



- Convection type
- Electronic controls
- Multi-power level
- 95 minutes digital timer
- Auto cook
- Combination cooking
- Time and weight defrost
- Steam clean
- Child safety lock
- Timer/clock
- Cooking complete alarm
- Multi-stage cooking

**1** Year  
Warranty  
on Product

**25 L**

**POWERFUL  
1500W**

# Multi-Function Cookers





## Majesty RCX 1 Mini



- Open lid transparent glass
- Accessories available
  - Aluminium anodized cooking bowl
  - Measuring cup
  - Spatula



2 YEAR WARRANTY ON PRODUCTS



## Majesty New RCX 3



- SS detachable lid
- Keep warm function
- Accessories available
  - Aluminium anodized cooking bowl
  - Aluminium anodized trivet
  - Measuring cup
  - Spatula



2 YEAR WARRANTY ON PRODUCTS



## Majesty RCX 18 PLUS



- SS detachable lid
- New attractive “Brick Red” color
- Keep Warm function
- Accessories available
  - 2 Aluminium anodized cooking bowls available
  - Measuring cup
  - Spatula
  - Aluminium anodized trivet



## Majesty RCX 18



- SS detachable lid
- Keep Warm function
- Aluminium anodized trivet
- Accessories available
  - Aluminium Anodized Cooking bowl
  - Measuring cup
  - Spatula



## Majesty RCX 28



- SS detachable lid
- Accessories available
  - Aluminium anodized cooking bowl
  - Aluminium anodized trivet
  - Measuring cup
  - Spatula



## Majesty RCX 42



- SS detachable lid
- Keep warm function
- Accessories available
  - Aluminium anodized cooking bowl
  - Measuring cup
  - Spatula





# Majesty RCX 21 DX



- Closed lid
- Keep warm function
- Steamer for steaming function
- Cook and carry
- Accessories available
  - Non-stick coated cooking bowl
  - Measuring cup
  - Spatula



# Majesty RCX 28 Deluxe

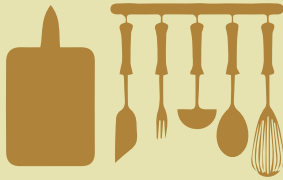
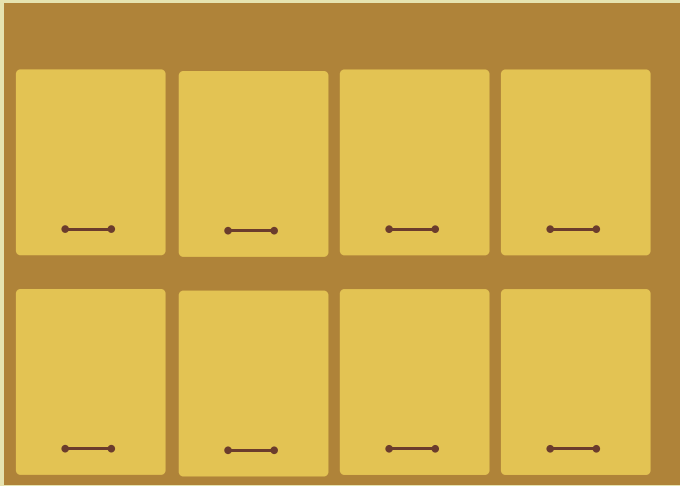


- Closed lid
- Keep warm function
- Steamer for steaming function
- Cook and carry
- Accessories available
  - Non-stick coated cooking bowl
  - Measuring cup
  - Spatula



# Kettles, Tea & Coffee Makers





**NEW**

# Majesty New KTX 7 Cordless Kettle



- White colour plastic body
- Concealed heating element
- Single function for boiling water
- Dry boil safe
- Neon indicator
- Cordless unit for convenient use
- Water level indicators on both side
- 360° connector
- Available in 1 ltr. 1100W and 1.7 ltr. 2000W



## Majesty Travel Kettle KTX 1



- White colour plastic body
- 2 utility cups and spoons
- Dry boil safe
- Auto shut off with neon indicator



## Majesty Travel Kettle KTX 2



- SS body with black PP enclosure
- 2 utility cups
- Dry boil safe
- Auto shut off with neon indicator



## Elec. Kettle 1 Ltr. Non-Strix



- White colour plastic body
- Single function for boiling water
- Cordless unit for convenient use
- Water levels indicators on both side
- Also available in 1.7 Ltr.



2 YEAR WARRANTY ON PRODUCT



CONCEALED  
HEATING  
ELEMENT



1  
LTR.



POWERFUL  
1100W

## Majesty KTX 11 SS



- SS body with black PP enclosure
- Concealed heating element
- Single function for boiling water
- Dry boil safe
- Neon indicator
- Auto shut off
- Cordless unit for convenient use
- Convenient spout and water level indicator
- 360° connector



2 YEAR WARRANTY ON PRODUCT



CONCEALED  
HEATING  
ELEMENT



1.2  
LTR.



POWERFUL  
1300W

## Majesty KTX 15 SS



- SS body with black PP enclosure
- Concealed heating element
- Single function for boiling water
- Dry boil safe
- Neon indicator
- Cordless unit for convenient use
- Cord winder
- 360° connector



## Majesty KTX 9 Multifunction



- SS body with black PP enclosure
- Concealed heating element
- Multi-function for boiling water, eggs and cooking rice, noodles pasta tea, coffee oats and corn
- Dry boil safe
- Neon indicator
- Auto shut off
- Cordless unit for convenient use
- 360° connector



# TMX 3 Tea Maker



- Black colour SS body
- Multi-function with dual heating element for boiling and brewing
- Dry boil safe
- Neon indicator
- Auto shut off
- Cordless unit for convenient use
- 360° connector





# Majesty CEX 11 Steam and Espresso Coffee Maker



- Makes upto 4 cups of espresso (240 ml)
- 3.5 to 4 bar working pressure for rich taste coffee
- Frothing function to make cappuccino
- Glass carafe with calibrations
- 3 function knob with filtration, pause & frothing
- SS filter cup with aluminium filter holder
- Removable & washable drip tray for easy cleaning



240  
ML

POWERFUL  
800W









| BRANCH                   | PHONE                              |
|--------------------------|------------------------------------|
| Ahmedabad                | 079-27543964 / 27543967 / 27540397 |
| Bangalore                | 080-22235486 / 22238984 / 22275505 |
| Bhubaneswar              | 0674-2390697 / 2396980 / 2394052   |
| Chandigarh               | 0172-5234600                       |
| Chennai                  | 044-30662200                       |
| Cochin                   | 0484-2391119 / 2396128 / 2392039   |
| Delhi                    | 011-23503714                       |
| Guwahati                 | 0361-2346497 / 2346498 / 2346499   |
| Hyderabad                | 040-23442932 / 23442933 / 23442934 |
| Indore                   | 0731-2548909 / 10 / 18             |
| Jaipur                   | 0141-2377364 / 2369541 / 2369542   |
| Kolkata                  | 033-22379270 / 22377657 / 22216638 |
| Lucknow                  | 0522-2620595 / 2613549             |
| Mumbai                   | 022-22089092 / 22089093            |
| Nagpur                   | 0712-2440318 / 2440319             |
| Noida                    | 011-25711961 / 25861963 / 25861964 |
| Patna                    | 0612-2231427 / 2220155 / 2225911   |
| Pune                     | 020-26302000 / 26302009 / 26302010 |
| Raipur                   | 0771-2263986 / 2263976 / 4060166   |
| <b>HEAD OFFICE</b>       | <b>022-22043780 / 22043733</b>     |
| <b>REGISTERED OFFICE</b> | <b>022-22043841 / 22045046</b>     |

**Corporate Office:** 701, Rustomjee Aspiree, Bhanu Shankar Yagnik Marg Off Eastern Express Highway, Sion (E), Mumbai - 400 022. Tel: 2406 4000.

**Regd. Office:** 45/47, Veer Nariman Road, Fort, Mumbai - 400 001.

Tel No.: 022-22043841, 22045046 | Fax: 022-22851279

CIN: L31500MH1938PLC009887

Visit us at: [www.bajajelectricals.com](http://www.bajajelectricals.com)

Free home service\*: 022-4128 0000 / 1800 102 5963

Dealer Stamp

A165UCH20JUL17

